

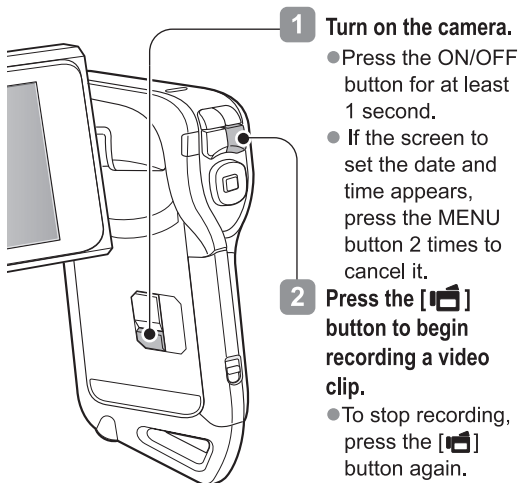
SANYO

Dual Camera
VPC-CA9EX
VPC-CA9
VPC-CA9GX

Xacti QUICK GUIDE



STEP 1 RECORD A VIDEO CLIP

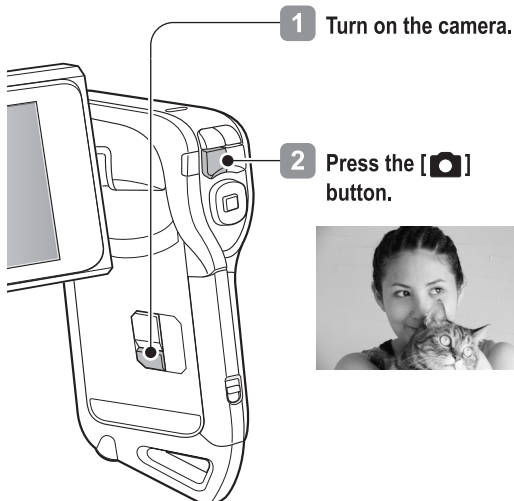


If the image is not captured...

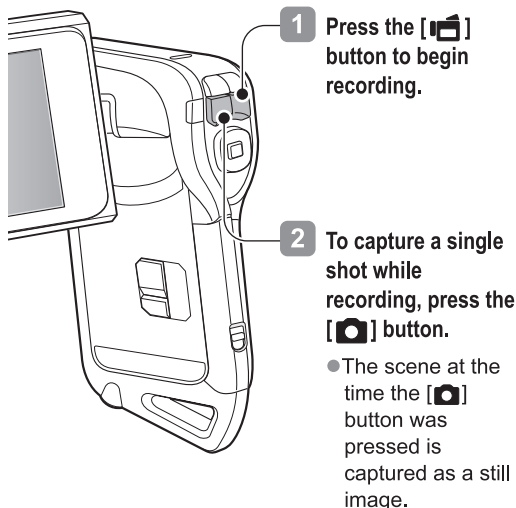
Is there enough power left in the battery? Recharge the battery pack.

(See "CHARGE THE BATTERY PACK" on the reverse side.)

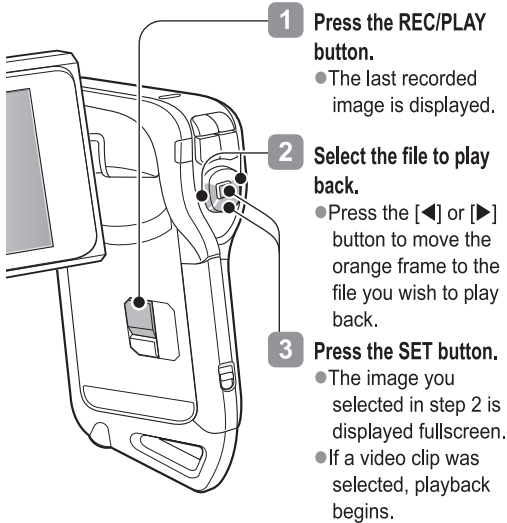
STEP 2 CAPTURE A STILL IMAGE



You can capture a still image while recording a video clip.



STEP 3 VIEWING IMAGES



To switch to the Recording Screen, press the REC/PLAY button.

Press the REC/PLAY button to switch between the Recording Screen and the Playback Screen.

Important!

Concerning your camera's waterproof feature

This camera possesses waterproof properties compliant with JIS IPX8 standards; however, note that any malfunction or problems arising from failure to heed the following precautions are not covered by the warranty.

■ Cautions concerning use in water

- Do not immerse in water at a depth greater than 1.5 m (4.92 ft.).
- Do not immerse in water for longer than 60 minutes.



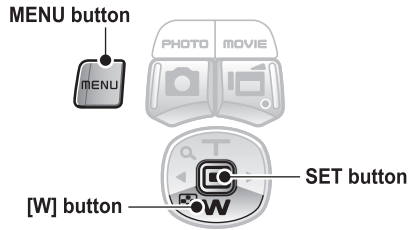
- Do not let the interior of the battery/card compartment become wet



■ After using the camera in water...

- After the camera has been used in water, use fresh water to wash it.
- Take care to completely drain the camera, and use a dry cloth to wipe off any drops of water adhering to it.

STEP 4 DELETING IMAGES

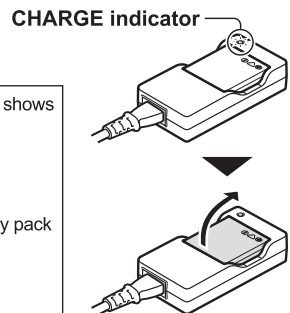
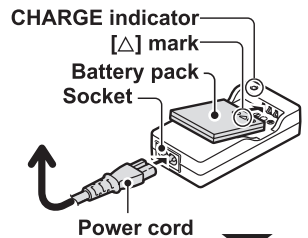


- 1 Display the data you wish to delete, and press the MENU button.**
 - The Menu Screen appears.
- 2 Press the [W/] button to select "DELETE", and press the SET button.**
- 3 Press the SET button.**
- 4 Select "DELETE", and press the SET button.**
 - The data is deleted.

Did your photos turn out the way you hoped? Even if you make a mistake, it's easy to delete the pictures you aren't satisfied with. Unlike film cameras, with a dual camera you can take all the photos you want, keep the ones you like and delete the rest.

CHARGE THE BATTERY PACK

Use the supplied charger to charge the battery pack.



The CHARGE indicator shows the battery pack charge status.

- Lights red during recharging.
- Turns off when battery pack is fully charged.
- The charging time is approx. 90 minutes.